

**mahATN**  
creative cover materials  
since 1810

VEGAN LEATHER  
ECOVYN  
Kunstleder / Vinyl

90 % bio based  
100 % Vegan



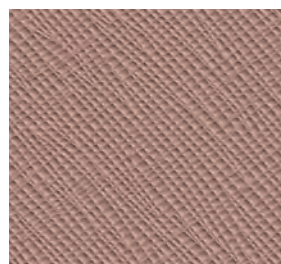
# ECOVYN by mah-ATN



541 x 6343



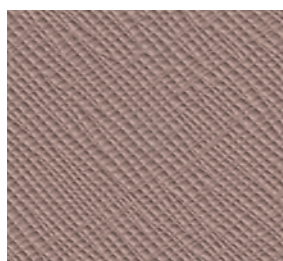
541 x 6366



541 x 6365



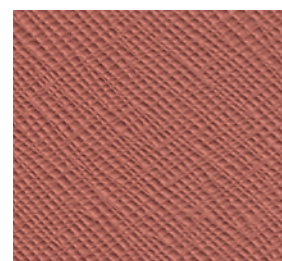
541 x 6351



541 x 6364



541 x 6369



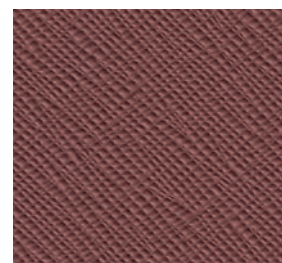
541 x 6368



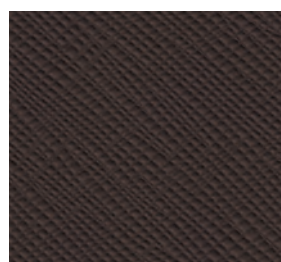
541 x 6346



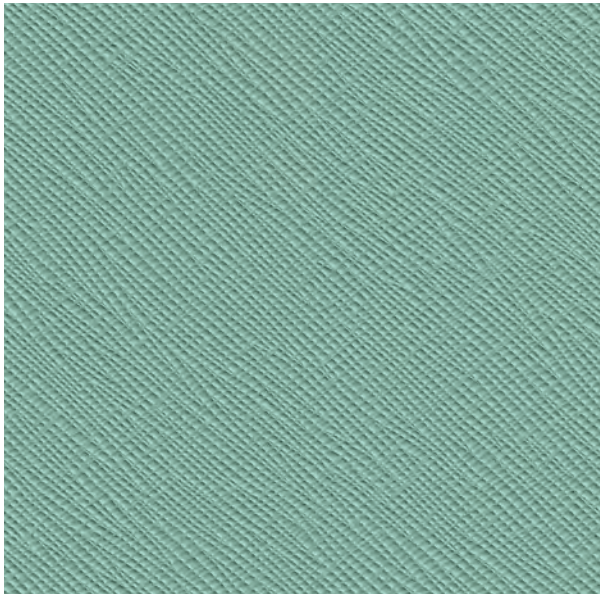
541 x 6354



541 x 6352



541 x 6367



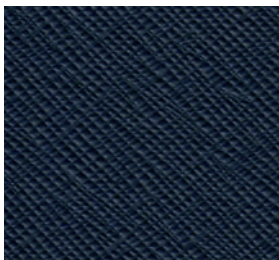
541 x 6348



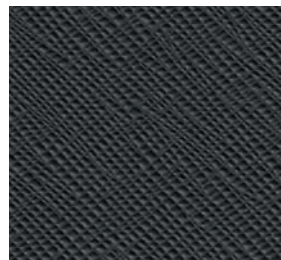
541 x 6356



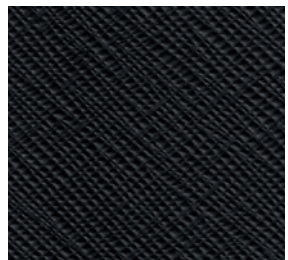
541 x 6357



541 x 6342



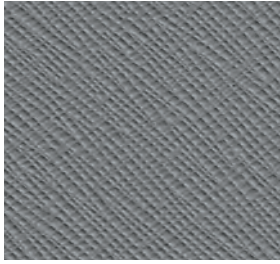
541 x 6344



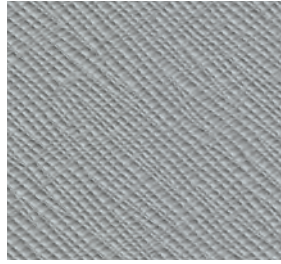
541 x 6341



0161/2022  
IMO FTPC 20120 Part 8



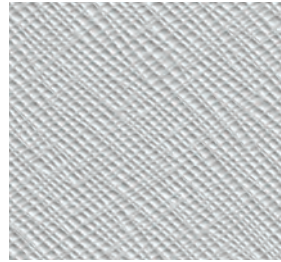
541 x 6345



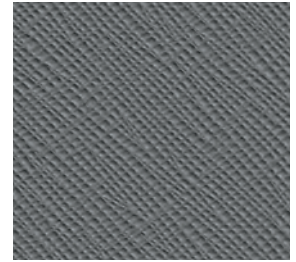
541 x 6353



541 x 6347

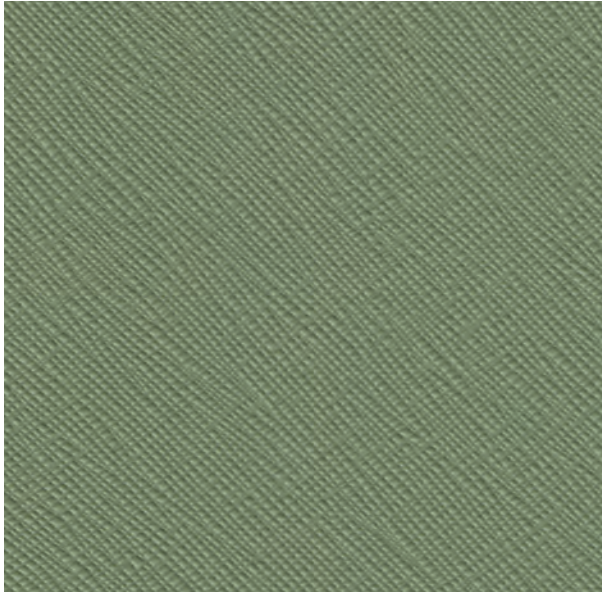


541 x 6363

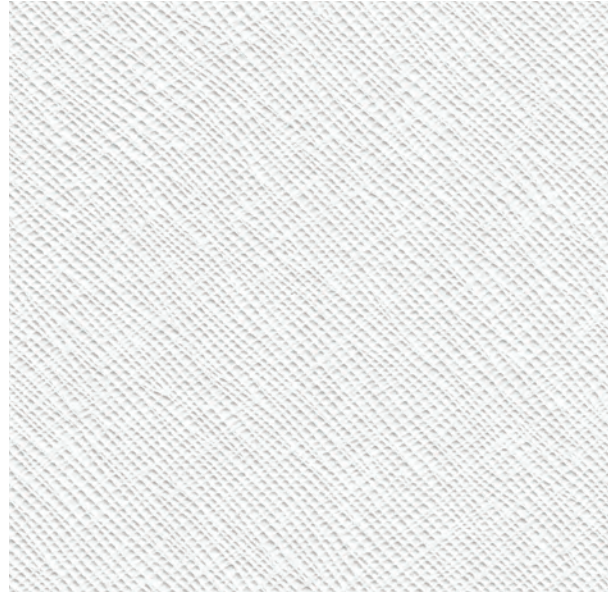


541 x 6350





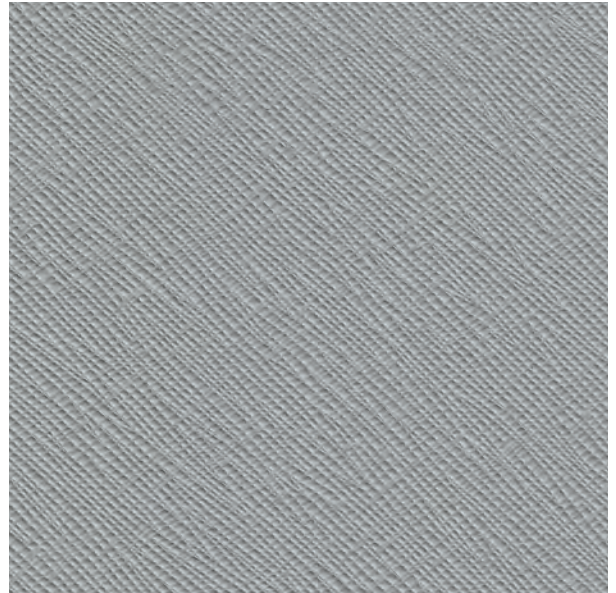
541 x 6356



541 x 6347



541 x 6354




541 x 6353





541 x 6367



541 x 6350

		
Produktspezifikation	Gewicht / Dicke	735 +/- 5% g/m <sup>2</sup> / 1,10 +/- 0,10 mm
	Zusammensetzung	> 95% bio basiert / < 5% anorganisch / 100% vegan
	Zugfestigkeit	Kette ≥ 400 N/5 cm Schuss ≥ 200 N/5 cm - DIN EN ISO 1421
	Bruchdehnung	Kette ≥ 35% Schuss ≥ 150% - DIN EN ISO 1421
	Weiterreißkraft	Kette ≥ 25 N Schuss ≥ 20 N - ISO 4674-1
	Haftung der Beschichtung	Kette ≥ 30 N/5 cm Schuss ≥ 25 N/5 cm - ISO 2411
	Abrieb (Martindale)	Kein Kornverlust bei 200.000 Zyklen - ISO 5470-2
	Reibung trocken/nass 20 Zyklen	≥ 4 Graue Skala Max. 5 - DIN EN ISO 105-X12
	Flexibilität	Kein Riss bei 150.000 Zyklen - ISO 5402
	Ethyl Alkohol 96% vol. Resistenz	≥ 4 Graue Skala Max. 5 - ISO 1428
	Bleichmittelbeständigkeit (4,5% Chlor)	≥ 4 Graue Skala Max. 5 - DIN 54021
	Brennverhalten	≤ 100 mm/min DIN 75200, ≤ 100 mm/min FMVSS 302, bestanden ISO 3795 Schwerbrennbar B1 ÖNORM B3825, kein Entzünden DIN/BS EN 1021 (1+2) kein Entzünden IMO RES.A652 (16), M2 NF-P 92-503
	Lichtechtheit	≥ 4 Blaue Skala Max. 8 - DIN EN ISO 105-B02
Alle Informationen: Änderungen und Irrtum vorbehalten. Chargenbedingte Farbabweichungen sind möglich.		

		
Product-specifications	Weight / Thickness	735 +/- 5% g/m <sup>2</sup> / 1,10 +/- 0,10 mm
	Composition	> 95% bio based / < 5% inorganic / 100% vegan
	Tensile strenght	warp ≥ 400 N/5 cm weft ≥ 200 N/5 cm - DIN EN ISO 1421
	Elongation at break	warp ≥ 35% weft ≥ 150% - DIN EN ISO 1421
	Tear strength	warp ≥ 25 N weft ≥ 20 N - ISO 4674-1
	Coating adhesion	warp ≥ 30 N/5 cm weft ≥ 25 N/5 cm - ISO 2411
	Abrasion resistance (Martindale)	no grain loss @ 200,000 cycles - ISO 5470-2
	Rubbing dry/wet 20 cycles	≥ 4 grey scale max. 5 - DIN EN ISO 105-X12
	Flexibility	no crack @ 150,000 cycles - ISO 5402
	Ethyl alcohol 96% resistance	≥ 4 grey scale max. 5 - ISO 1428
	Bleach resistance (4.5% chlorine)	≥ 4 grey scale max. 5 - DIN 54021
	Flame Resistance	≤ 100 mm/min DIN 75200, ≤ 100 mm/min FMVSS 302, passed ISO 3795 Flame resistant B1 ÖNORM B3825, no ignition DIN/BS EN 1021 (1+2) no ignition IMO RES.A652 (16), M2 NF-P 92-503
	Colour/Light Fastness	≥ 4 blue scale max. 8 - DIN EN ISO 105-B02
All information: Subject to changes and errors. Batch-related color deviations are possible.		

		
Spécifications du produit	Poids / Épaisseur	735 +/- 5% g/m <sup>2</sup> / 1,10 +/- 0,10 mm
	Tissu	> 95 % d'origine biologique / < 5 % d'origine minérale / 100 % végétalien
	Résistance à la traction	Chaîne ≥ 400 N/5 cm Trame ≥ 200 N/5 cm - DIN EN ISO 1421
	Allongement à la rupture	Chaîne ≥ 35% Trame ≥ 150% - DIN EN ISO 1421
	Résistance à la déchirure	Chaîne ≥ 25 N Trame ≥ 20 N - ISO 4674-1
	Adhérence du revêtement	Chaîne ≥ 30 N/5 cm Trame ≥ 25 N/5 cm - ISO 2411
	Abrasion (Martindale)	Pas de perte de grain après 200.000 cycles - ISO 5470-2
	Frottement à sec/humide 20 cycles	≥ 4 Échelle de gris Max. 5 - DIN EN ISO 105-X12
	Flexibilité	Pas de fissure après 150.000 cycles - ISO 5402
	Résistance à l'alcool éthylique 96% vol.	≥ 4 Échelle de gris Max. 5 - ISO 1428
	Résistance à l'eau de javel (4,5% chlore)	≥ 4 Échelle de gris Max. 5 - DIN 54021
	Comportement au feu	≤ 100 mm/min DIN 75200, ≤ 100 mm/min FMVSS 302, passé ISO 3795 Non inflammable ÖNORM B3825, pas d'allumage DIN/BS EN 1021 (1+2) pas d'allumage IMO RES.A652 (16), M2 NF-P 92-503
	Solidité à la lumière	≥ 4 Échelle bleue Max. 8 - DIN EN ISO 105-B02
Toutes les informations : Sous réserve de modifications et d'erreurs. Des écarts de couleur liés au lot sont possibles.		