



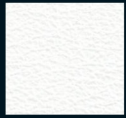
Kunstleder IV

Artificial Leather IV

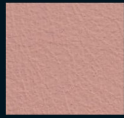




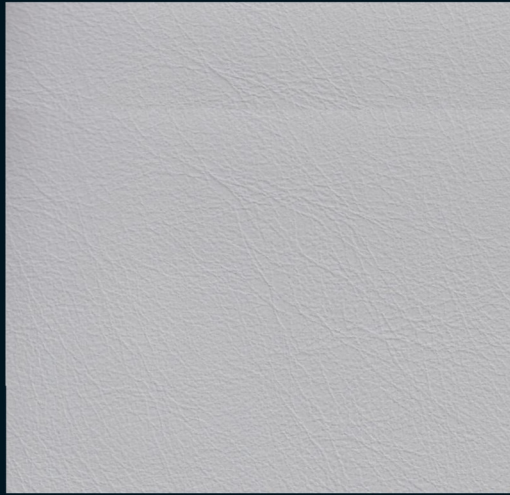
Topana FLS



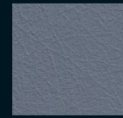
647-3001



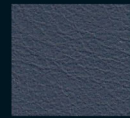
647-3005



647-3012



647-3010



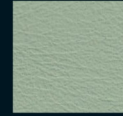
647-3011



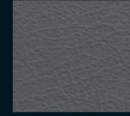
647-3002



647-3006



647-3008



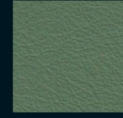
647-3013



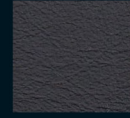
647-3003



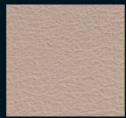
647-3007



647-3009



647-3027



647-3004



Torino FLS



647-3014



647-3018



647-3025



647-3023



647-3024



647-3015



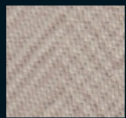
647-3019



647-3021



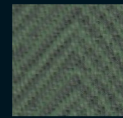
647-3026



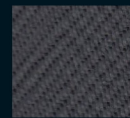
647-3016



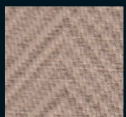
647-3020



647-3022



647-3028

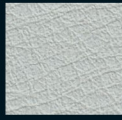


647-3017

Baron B1



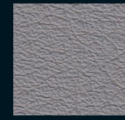
K6003



K6009



K6007



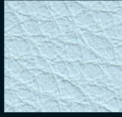
K6004



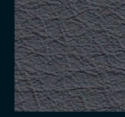
K6013



K6006



K6010



K6005



K6012



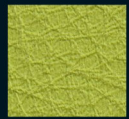
K6008



K6011



K6001



K6002

Materialeigenschaften und Verträglichkeiten/ Material Characteristics and Compatibilities

	Baron B1	Topana	Torino
Zusammensetzung/composition	ca. 83% PVC -Beschichtung ca. 17% Polyester/ Baumwolle-Jersey	ca. 1% PU-Finish ca. 84% PVC-Compound ca. 15% BW/PES-Gestrick	ca. 1% PU-Finish ca. 84% PVC-Compound ca. 15% BW/PES-Gestrick
Dicke/thickness	1,2 ± 0,1 mm	1,4 ± 0,2 mm	1,4 ± 0,2 mm
Flächengewicht/weight per unit area	ca. 700 ± 50 g/m ²	790 ± 50 g/m ²	790 ± 50 g/m ²
Höchstzugkraft/tensile strength längs/length quer/across	DIN EN ISO 1421 ≥ 350 N ≥ 200 N	DIN EN ISO 1421 ≥ 380 N ≥ 280 N	DIN EN ISO 1421 ≥ 380 N ≥ 280 N
Dauerknickverhalten/flexion längs/length quer/across	DIN 53359 ≥ 50.000 Knickungen/flexes ≥ 50.000 Knickungen/flexes		
Weiterreißkraft/tear strength längs/length quer/across	DIN EN ISO 4674-1 B ≥ 20 N ≥ 20 N	DIN EN ISO 4674-1 B ≥ 30 N ≥ 30 N	DIN EN ISO 4674-1 B ≥ 30 N ≥ 30 N
Lichtechtheit /light fastness	DIN EN ISO 105-B02 6 Note/class	DIN EN ISO 105-B02 6 Note/class	DIN EN ISO 105-B02 6 Note/class
Farbechtheit gegen Reiben/ colourfastness to rubbing trocken/dry nass/wet	DIN EN ISO 105-X 12 DIN EN 20105-A03 ≥ 5 Note/class	DIN EN ISO 105-X 12 ≥ 4,5 Note/class ≥ 4,5 Note/class	DIN EN ISO 105-X 12 ≥ 4,5 Note/class ≥ 4,5 Note/class
Abriebwerte Martindale/ martindale abrasion	DIN EN ISO 5470-2 ≥ 200.000 cycles	DIN EN ISO 5470-2 ≥ 100.000 cycles	DIN EN ISO 5470-2 ≥ 50.000 cycles
Warenbreite/width	140 cm	140 cm	140 cm
Rollenlänge/lengs of roll	25 m	30 m	30 m

Kollektionsmuster sind keine Urmuster. Kleine Farbabweichungen sind möglich.
Swatches are no master samples. Small differences may occur.

Brandschutznormen / *Low Flammability Tests*

	Din 4102 (Part 1, B1)	Din 4102 (Part 1, B2)	Önorm B 3825	Önorm A(B) 3800 (Part 1)	EN 1021 (Part 1+2)	BS 5852 (I. Source 0+1)	BS 5852 (I. Source 5/crib 5)	NF D 60-013	NF P 92-503 (M2)	UNI 9175 (Classe 1 / IM)	MVSS 302 / ISO 3795 DIN 75200	IMO FTPC (Part 8)	FAR 25.853
													
Baron B1	X	X	X	X	X	X	X	X	X	X	X	X	X
Topana		X	X		X	X	X		X		X		
Torino		X	X		X	X	X		X		X		



Hans Reinke
Handelsgesellschaft mbH

Brandstücken 20 Tel. +49 40 39 10 68-0
22549 Hamburg Fax +49 40 39 10 68-29
info@hans-reinke.com www.hans-reinke.com

HOLLAND, BELGIUM & LUXEMBOURG



Hans Reinke Benelux B.V.

D'n Oliepint 2 Tel. +31 13 505 6702
5081 NT Hilvarenbeek Fax +31 13 505 3073
Netherlands info@hans-reinke.nl

SWITZERLAND & AUSTRIA



Jörg & Reinke GmbH

Bahnhofstraße 42 Tel. +41 34 402 5005
CH-6162 Fax +41 34 402 55 53
Entlebuch info@joerg-leder.ch

POLAND



Automotive Textiles

Jakub Ponczyński Tel. +48 42 288 10 10
93-490 Łódź Mob.+48 513 014 610
Pabianicka 119/131 jakub@ponczynski.com