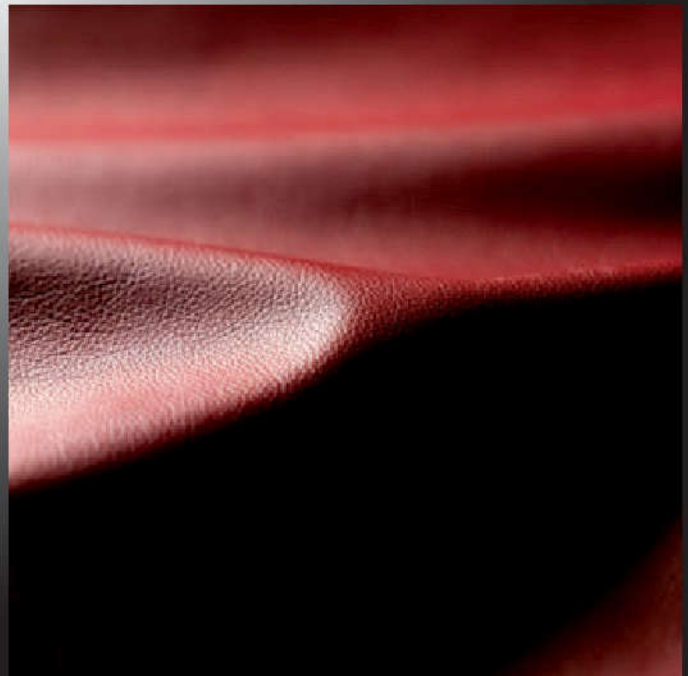
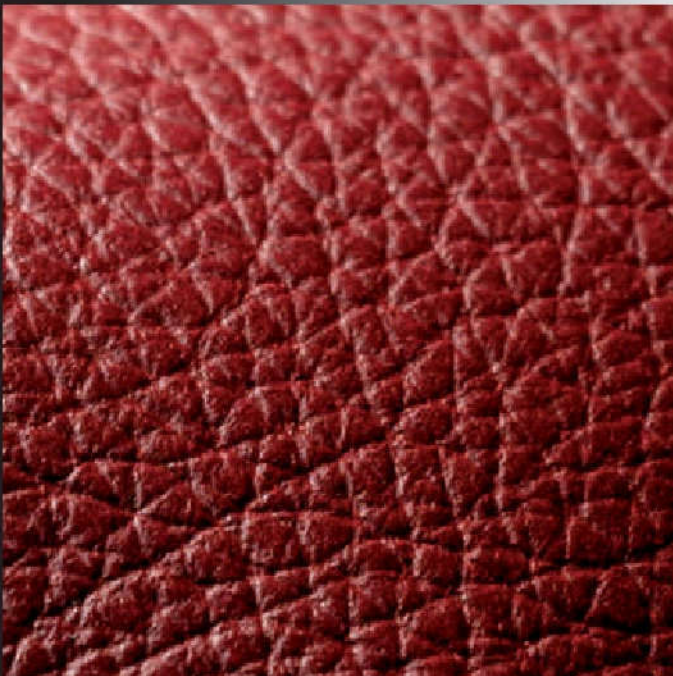
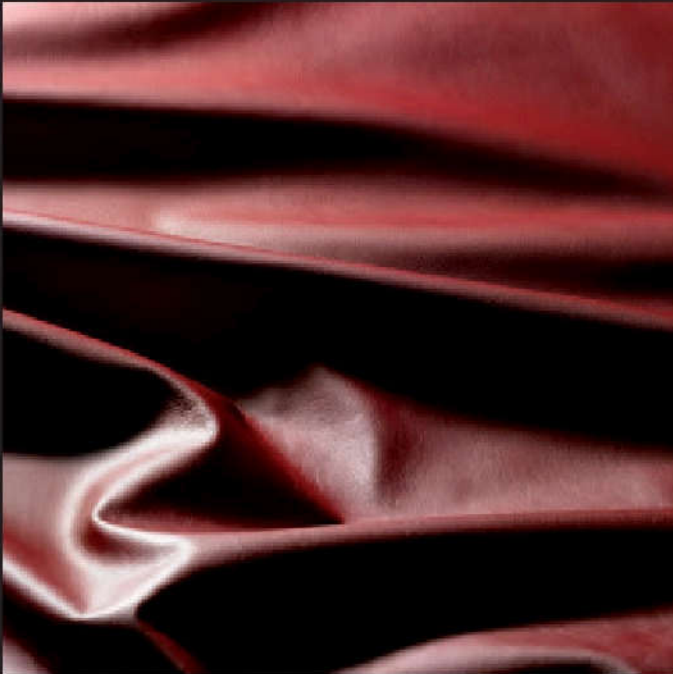
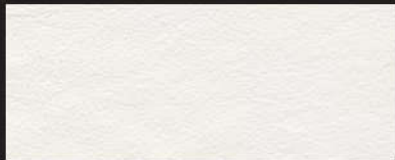




Polsterleder *Upholstery Leather*



Royal + Modulsystem
Royal **TEC**



9192 reinweiß



9191 lichtgrau



9112 hellbraun



9172 weiß



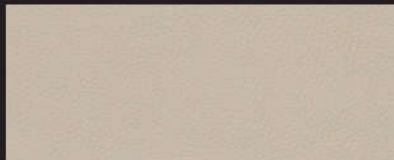
9162 hellgrau



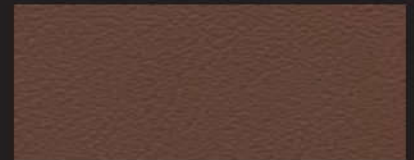
9133 tabak



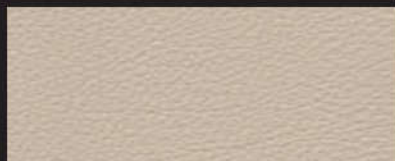
9124 schneeweiß



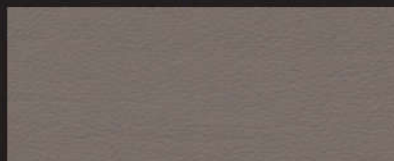
9190 stone



9139 nougat



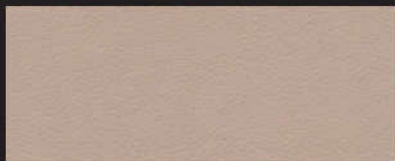
9163 perle



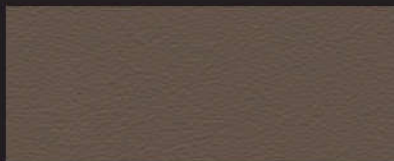
9173 taupe



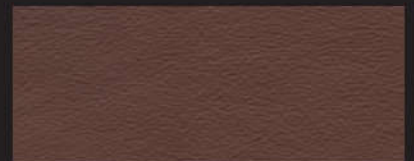
9170 mahagoni



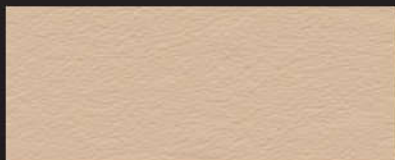
9167 pergament



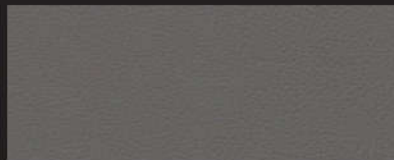
9174 schlamm



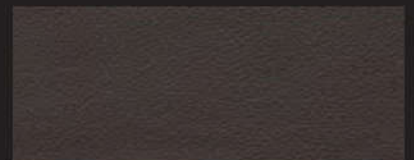
9135 mocca



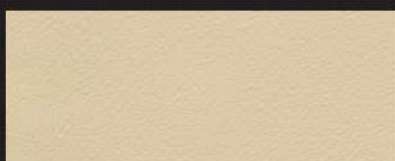
9171 sand



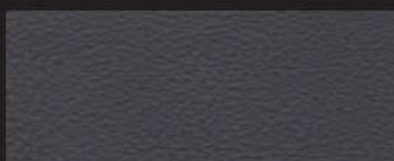
9134 granit



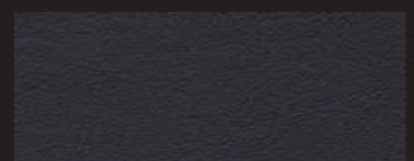
9116 negro



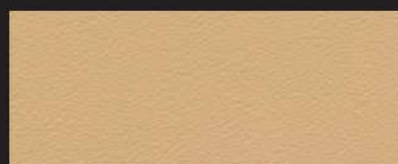
9161 elfenbein



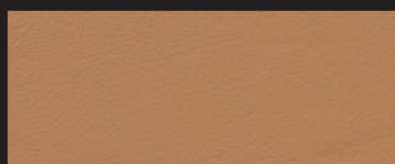
9164 basalt



9123 schwarz



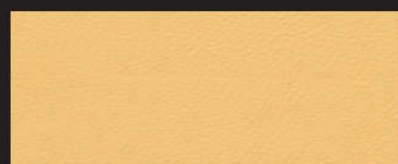
9160 sahara



9110 ocker



9137 rosso



9189 amber



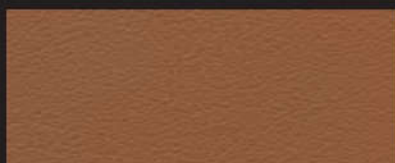
9180 gold



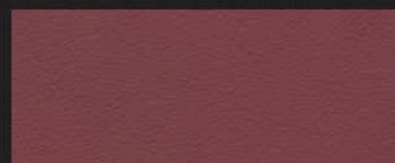
9114 himbeere



9176 sonne



9111 cognac



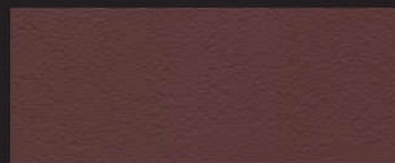
9181 fuchsia



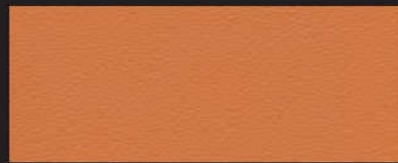
9188 yellow



9175 rost



9115 bordeaux



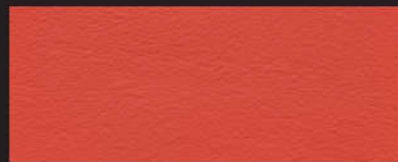
9177 orange



9168 koralle



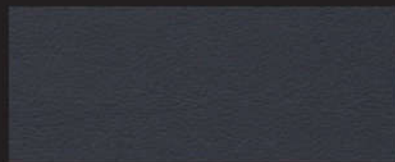
9179 aubergine



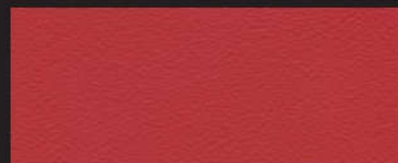
9187 mandarine



9113 rostbraun



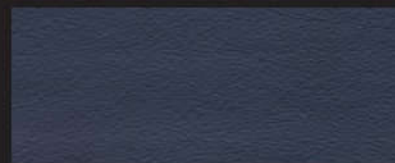
9136 marine



9178 feuer



9165 blutrot
mit Wolkeneffekt / 2-tone-shaded



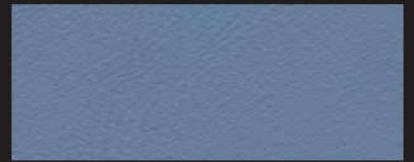
9122 dunkelblau



9200 pistazie



9186 aquamarine



9185 sky



9182 apfel



9131 lagune



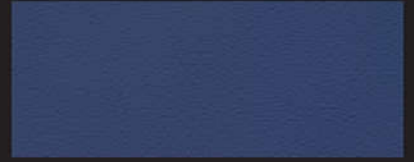
9184 ultramarine



9130 laurel



9117 smaragd



9183 deep sea



9140 forest



9118 petrol



9121 taubenblau



9119 flaschengrün



9120 tannengrün



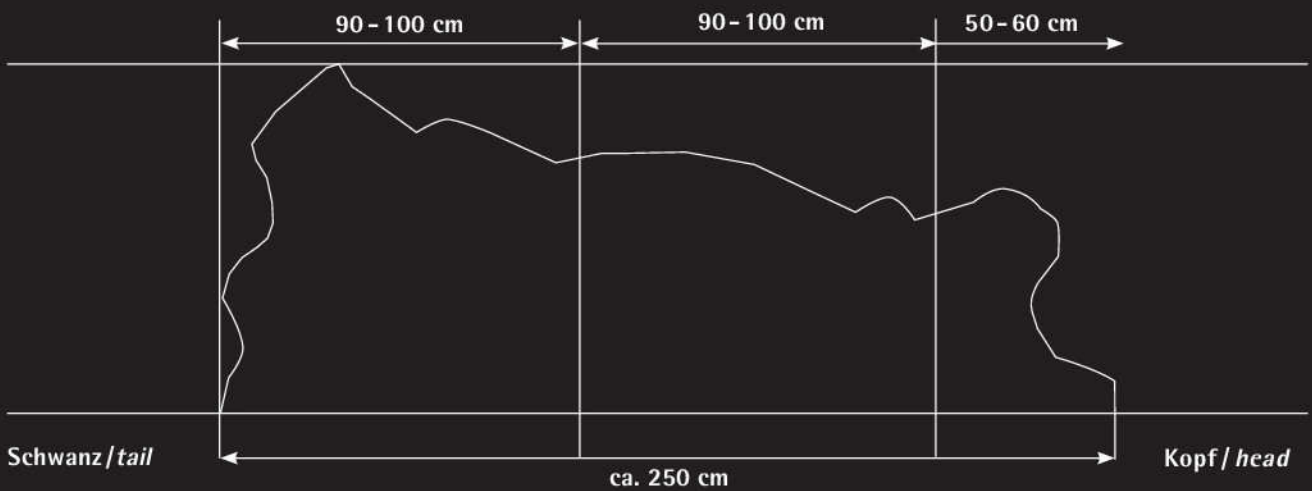
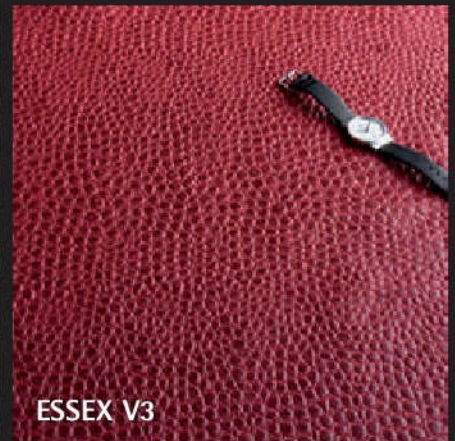
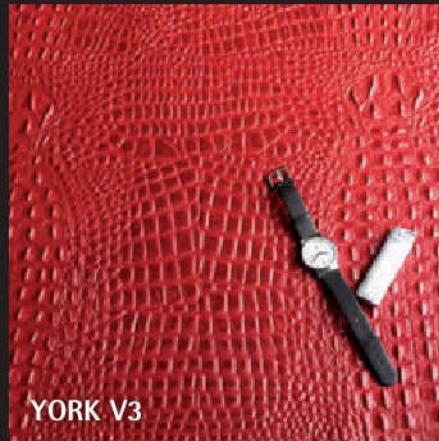
9138 azur

Royal + Modulsystem, Royal

Technische Werte/ <i>technical specifications</i>	Meßmethode/ <i>test methods</i>	Werte/ <i>values</i>
Stärke/ <i>strength</i>		1,3 mm - 1,4 mm
Flächengewicht/ <i>mass per unit area</i>		ca. 900 g/qm
Höchstzugkraft/ <i>tensile test</i>	ISO 3376	≥ 10 N/mm ²
Bruchdehnung/ <i>breaking elongation</i>	ISO 3376	35 - 65%
Weiterreißkraft/ <i>tear strength</i>	ISO 3377-1	≥ 30 N
Taber 1.000 Touren/ <i>Taber 1.000 cycles</i>	CS-10, 500g	keine Beschädigung/no damage
Dauerfaltverhalten trocken/ <i>flexicon dry</i>	ISO 5402	Note 1
Migration FS/ZS/ <i>migration FS/ZS</i>	ISO 15701	≥ Note 4
Reibechtheit nass/ <i>rub fastness wet</i>	ISO 11640	≥ Note 4
Reibechtheit alkalisch/ <i>rub fastness alkaline</i>	ISO 11640	≥ Note 4
Reibechtheit trocken/ <i>rub fastness dry</i>	ISO 11640	≥ Note 5
Abriebwerte Martindale/ <i>rub fastness Martindale</i>	DIN EN ISO 5470-2	> 100.000
Schrumpfprüfung/ <i>shrinking test</i>	168h 93°C 168h 93°C 168h 38°C/98%rLF	≤ 5% ≥ Note 3 ≥ Note 4
Heißlichtechtheit/ <i>hotlight fastness</i>		≥ Note 6 - 7
Brennbarkeit/ <i>flammability</i>	DIN 75200/ISO 3795/MVSS 302 DIN EN 1021 Teil 1+2, ISO 8191-1 BS 5852 crib 3 California TB 117 (Draft 02/2002)	



Kollektionsmuster sind keine Urmuster. Kleine Farbabweichungen sind möglich.
Swatches are no master samples. Small differences may occur.



Zusätzlicher Flammenschutz wahlweise für:

| Flugzeuge FAR 25.853 a+b - ab 3 Haut | Boote, Schiffe IMO A.652 (16) - ab 10 Haut
| Objektbereich: | andere auf Anfrage
B1, B2, EMPA (5.3), BS 5852 (1990) crib 5 - ab 10 Haut

TEC I

additional flame protection alternatively for:

| airplane FAR 25.853 a+b - **from 3 hides** | boats, ships IMO A.653 (16) - **from 10 hides**
| contract furnishing: | others upon request
B1, B2, EMPA (5.3), BS 5852 (1990) crib 5 - **from 10 hides**

Reduzierte Stärke/Gewicht

zusätzlich lieferbar in anderen Stärken zwischen 1,0 und 1,3 mm

TEC III

reduced thickness/weight

additional delivery in different thickness between 1,0 and 1,3 mm

Ledervorschrumpfung

Verbesserung des Schrumpfverhaltens durch Wärmebehandlung
| für temperaturbeständige Passform (z. B. Armaturenbretter)
| Maßverlust durch Schrumpfung 2-3 %

TEC IV

leather pre-shrinking

improved shrinkage due to heat treatment
| for temperature resistant fit (e.g. dashboards)
| size loss due to shrinkage 2-3%

Strukturprägung

| in allen Royalfarben, nur in halben Häuten
| Prägung quer zur halben Haut mit Breiten von 90-150 cm je nach Prägung
| alle 90-100 cm in der Länge ist der Stoß der Prägeplatten zu sehen - **Varianten:**
• V1 - nur geprägt • V2 - geprägt mit Glanz gewischt
• V3 - mit Farbe gewischt, Kuppe dunkel • V4 - mit Farbe gewischt, Kuppe hell

TEC V

grain embossing (size of embossing)

| in all Royal colours; for technical reasons, only half hides (halves)
| the embossing is done across the hide, depending on the area of the hide, a width of approx. 90 to 150 cm
| the joint of the embossing plate can be seen every 90 to 100 cm along the length of the hide - **versions:**
• V1 - only embossed • V2 - embossed and wiped for shine
• V3 - embossed, wiped with colour, embossed heads dark • V4 - embossed, wiped with colour, embossed heads bright

**Lieferzeiten/
time of delivery**

	Royal	TEC I	TEC III	TEC IV	TEC V
Mindestmenge/ minimum order	0,5 Haut/ hide	siehe oben/ see above	3 Haut/ hides	1 Haut/ hide	2/2 Haut/ hides
Lieferzeit Tage/ time of delivery days	sofort/ immediately	1-2 Wochen/ 1-2 weeks	1 Woche/ 1 week	1-2 Wochen/ 1-2 weeks	4 Wochen/ 4 weeks



Hans Reinke
Handelsgesellschaft mbH

Brandstücken 20 Tel. +49 40 39 1068-0
22549 Hamburg Fax +49 40 39 1068-29
info@hans-reinke.com www.hans-reinke.com

HOLLAND, BELGIUM & LUXEMBOURG



Hans Reinke Benelux B.V.

D'n Oliepint 2 Tel. +31 13 505 6702
5081 NT Hilvarenbeek Fax +31 13 505 3073
Netherlands info@hans-reinke.nl

SWITZERLAND & AUSTRIA



Jörg & Reinke GmbH

Bahnhofstrasse 42 Tel. +41 34 402 5005
CH-6162 Fax +41 34 402 5553
Entlebuch info@joerg-leder.ch

POLAND



Automotive Textiles

Jakub Ponczyński Tel. +48 42 288 1010
93-490 Łódź Mob.+48 513 014 610
Pabianicka 119/131 jakub@ponczynski.com