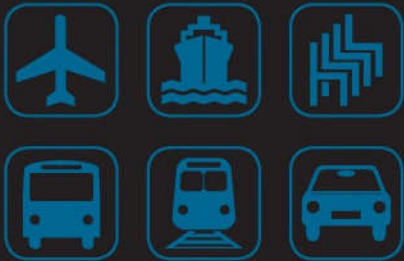




Polsterleder *Upholstery Leather*



Prima Nappa +
Modulsystem
Prima **TEC**

Prima Nappa + Modulsystem

Prima **TEC**

Zusätzlicher Flammenschutz wahlweise für:

| Flugzeuge FAR 25.853 a+b - ab 3 Haut

| Objektbereich:

B1, B2, EMPA (5.3), BS 5852 (1990) crib 5 - ab 10 Haut

| andere auf Anfrage

TEC I

additional flame protection alternatively for:

| *airplane FAR 25.853 a+b - from 3 hides*

| *contract furnishing:*

B1, B2, EMPA (5.3), BS 5852 (1990) crib 5 - **from 10 hides**

| *others upon request*

Lieferzeiten/ *time of delivery*

Prima Nappa

TEC I

Mindestmenge/
minimum order

ab 0,5 Haut/*from 0,5 hides*

siehe oben/*see above*

Lieferzeit Tage/
time of delivery days

sofort/*immediately*

ca. 2Wochen/*approx. 2 weeks*

PRIMA NAPPA

| Narben korrigiert
| grain corrected

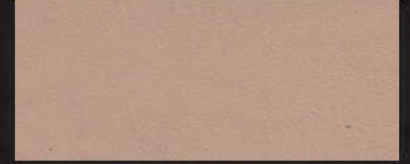
Technische Werte/ technical specifications	Meßmethode/ test methods	Werte/ values
Dicke/ <i>thickness</i>	DIN EN ISO 2589	0,9 mm - 1,3 mm
Flächengewicht/ <i>mass per unit area</i>	DIN EN ISO 2420	< 800 g/m ²
Reibechtheit/ <i>rub fastness</i> trocken/ <i>dry</i> nass/ <i>wet</i> pH=8	EN ISO 11640 1000 cycles 200 cycles 50 cycles	4 - 5 grey scale 4 grey scale 4 grey scale
Zugfestigkeit/ <i>tensile strength</i> Höchstzugkraft/ <i>maximum tensile force</i> Bruchdehnung/ <i>breaking elongation</i>	EN ISO 3376	≥ 80 N 30 - 70 %
Dauerknickverhalten/ <i>flexion</i> 50.000 Knickungen/ <i>flexes</i>	EN ISO 5402	Keine Beschädigung/ <i>no damage</i>
Abrieb/ <i>taber test</i>	EN ISO 17076	2.000 cycles: Keine Beschädigung/ <i>no damage</i>
Weiterreißkraft/ <i>tear strength</i>	EN ISO 3377-2	≥ 15 N
Haftung der Zurichtung/ <i>adhesion of finish</i>	EN ISO 11644	≥ 4 N/cm
Stichausreißkraft/ <i>stitch tear strength</i>	EN ISO 23910	≥ 50 N
Lichtechtheit/ <i>light fastness</i>	EN ISO 105-B06	≥ 6 blue scale
Brennprüfung/ <i>flammability</i>	DIN EN ISO 1021 1+2 BS 5852 source 3 California TB 117 ECE R 118.02 Annex 6,7 (DIN 75200 / FMVSS 302) IMO A.652 Annex 1 Part 8	OK



1392 weiß



1356 champagner



1373 oak



1368 marble



1369 sesame



1425 clay



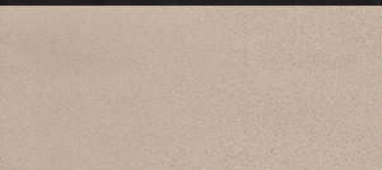
1352 lotusweiß



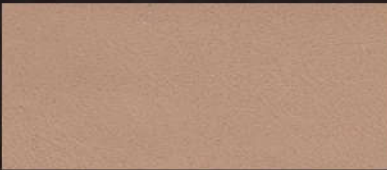
1386 cremeweiß



1426 peat



1353 kiesel



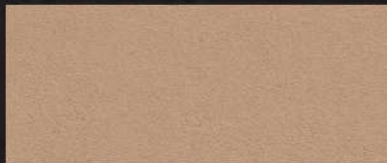
1366 desert



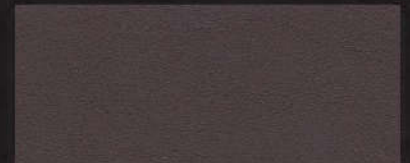
1361 kastanienbraun



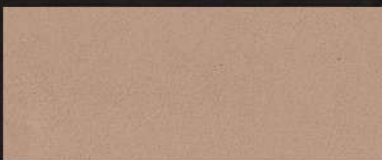
1390 crema



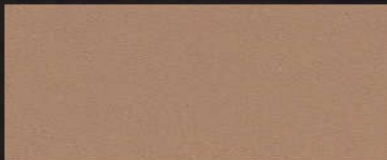
1430 tauger



1433 dattelbraun



1385 brittle



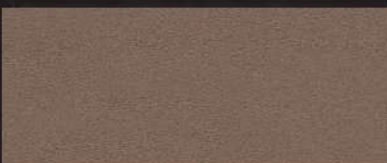
1431 bengasi



1429 dark mocca



1384 sandbeige/java



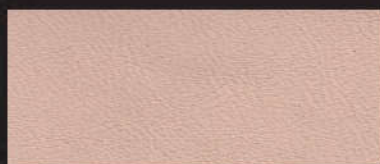
1432 helios mittel



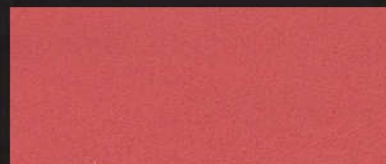
1362 brasil



1383 beige



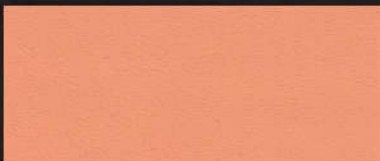
1363 powder



1388 flamingo



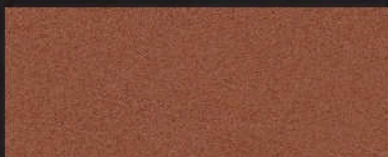
1387 modena



1381 apricot



1394 poppy



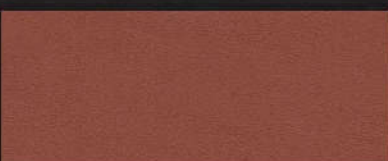
1391 zimt



1395 lava



1804 flashred



1427 english tan



1364 mugellorot



1393 cherry



1380 klassischrot



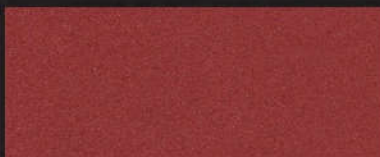
1389 sportrot



1375 lime



1367 karmesinrot



1365 trinidadrot



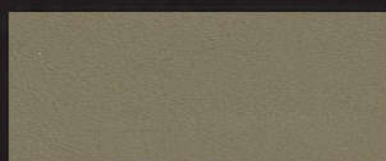
1377 mustard



1359 redwood



1354 rot



1410 kiwi



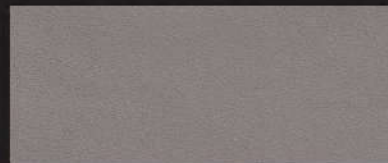
1419 kieselgrau



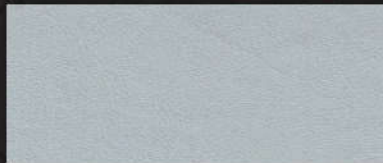
1415 gravel



1404 dove



1421 cinder



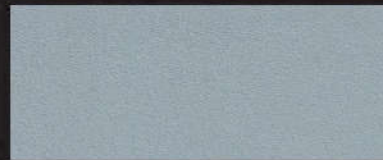
1414 white blue



1405 steelblue



1422 basalt



1402 ice



1397 santorinblau



1420 tartufo hell



1401 sky



1371 tobagoblau



1411 pea



1399 heaven



1407 denim



1412 nephrite green



1396 atlantic



1408 mauritiusblau



1413 steppe



1400 lagoon



1409 royalblau

a Nappa + Modulsystem, Prima **TEC**



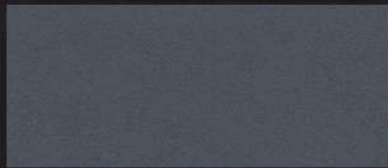
1416 seagull



1355 silbergrau hell



1358 silbergrau dunkel



1406 pazifikblau



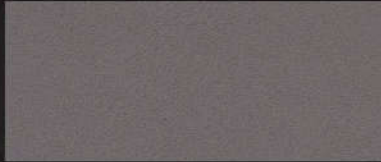
1357 silbergrau



1418 grigio sirius



1434 graublau



1423 muschel



1382 anthrazit hell



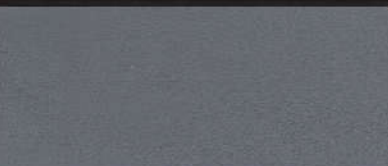
1370 ultramarin



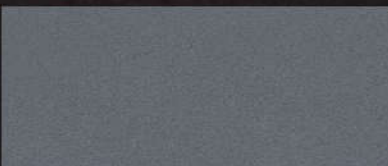
1424 verkehrsgrau



1351 schwarz



1360 oriongrau mittel



1417 granitgrau dunkel



Kollektionsmuster sind keine Urmuster. Kleine Farbabweichungen sind möglich.
Swatches are no master samples. Small differences may occur.



Hans Reinke
Handelsgesellschaft mbH

Brandstücken 20 Tel. +49 40 39 10 68-0
22549 Hamburg Fax +49 40 39 10 68-29
info@hans-reinke.com www.hans-reinke.com

HOLLAND, BELGIUM & LUXEMBOURG



Hans Reinke Benelux B.V.

D'n Oliepint 2 Tel. +31 13 505 6702
5081 NT Hilvarenbeek Fax +31 13 505 3073
Netherlands info@hans-reinke.nl

SWITZERLAND & AUSTRIA



Jörg & Reinke GmbH

Bahnhofstrasse 42 Tel. +41 34 402 5005
CH-6162 Fax +41 34 402 5553
Entlebuch info@joerg-leder.ch

POLAND



Automotive Textiles

Jakub Ponczyński Tel. +48 42 288 10 10
93-490 Łódź Mob. +48 513 014 610
Pabianicka 119/131 jakub@ponczynski.com