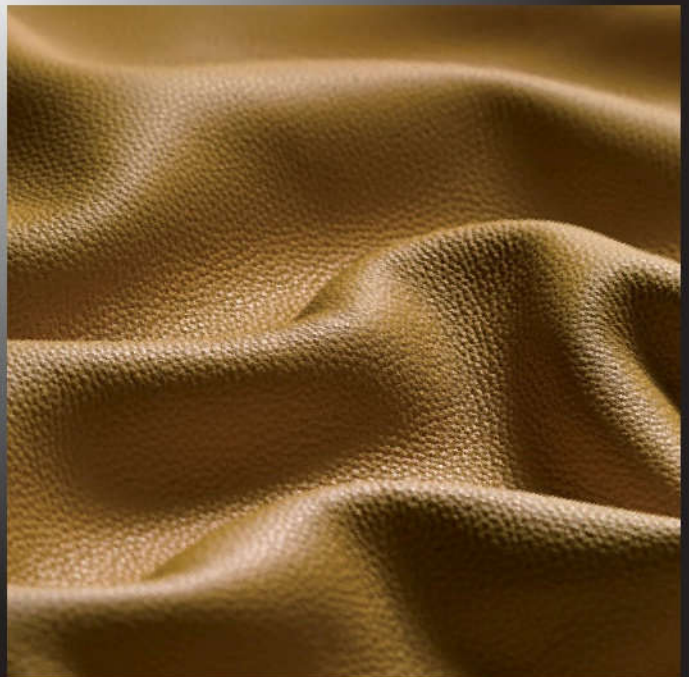
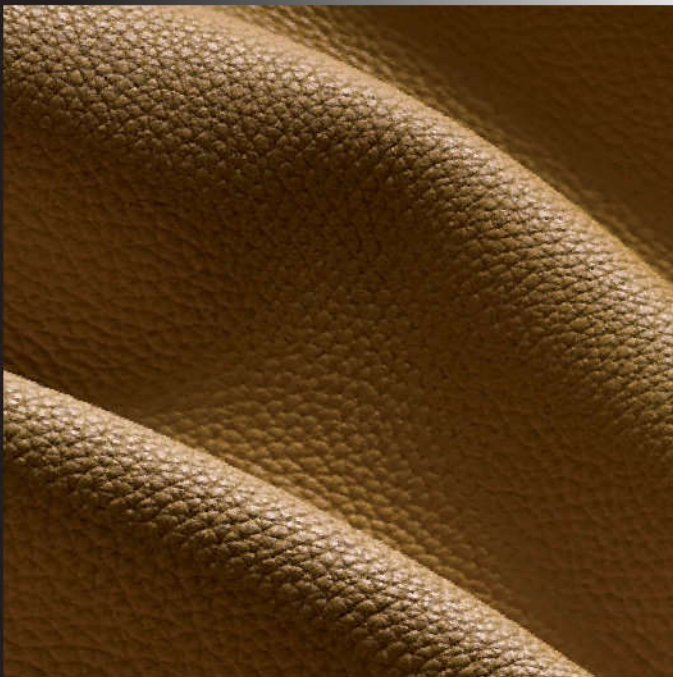


HANS REINKE

# Möbelleder *Upholstery Leather*



## Mondial

| pflegeleicht, robust  
| *easy-care, hardwearing*

3.0

# Mondial

<i>Technische Werte/ technical specifications</i>	<i>Meßmethode/ test methods</i>	<i>Werte/ values</i>
Dicke/ <i>thickness</i>		1,6 mm - 1,8 mm
Reibechtheit/ <i>rub fastness</i> trocken/ <i>dry</i> nass/ <i>wet</i> pH=8	DIN EN ISO 11640 500 cycles 200 cycles 50 cycles	5 grey scale 4 grey scale 4 grey scale
Dauerknickverhalten/ <i>flexion</i> 30.000 Knickungen/ <i>flexes</i>	DIN 53351	Keine Beschädigung/ <i>no damage</i>
Weiterreißkraft/ <i>tear strength</i>	DIN 53329	> 20 N/mm
Haftung der Zurichtung/ <i>adhesion of finish</i>	IUF 470 / ISO 11644	> 2,5 N/cm
Lichtechtheit/ <i>light fastness</i>	DIN EN ISO 105-B 02	> 5 blue scale
Brennbarkeit/ <i>flammability</i>	DIN EN 1021 Teil 1+2 ISO 8191-1 BS 5852 source 3 California TB 117 (Draft 02/02) ECE R 118.02 Annex 6,7 (DIN 75200/FMVSS 302)	
Narben/ <i>grain</i>	korrigiert/ <i>corrected</i>	
Hautgröße circa/ <i>average size</i>		5 m <sup>2</sup>



**8237** white heat



**8503** saffron



**8506** copper brown



**8615** vanilla



**8505** broom yellow



**8511** brick



**8495** ivory



**8195** sahara



**8059** rouge corail



**8499** shell beach



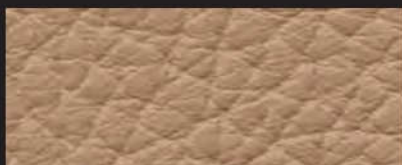
**8497** red clay



**8508** flame red



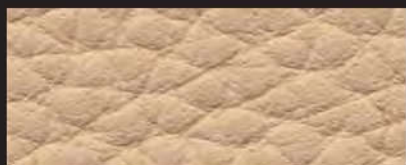
**8951** ginger



**8490** mohair



**8509** rouge brun



**8333** nature



**8504** rouge vin



**8251** copper antique



**8498** camel



**8239** cigar



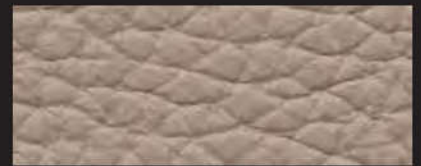
**8496** pearl



**8245** loam



**8202** chestnut



**8011** linen



**8168** walnut light



**8502** espresso



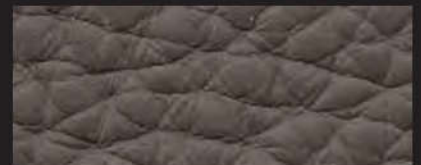
**8233** truffle



**8500** yellow balau



**8507** walnut dark



**8236** lava

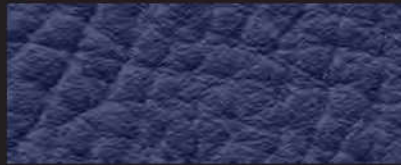


# Mondial

Stärke 1,6 bis 1,8 mm / strength 1,6 to 1,8 mm



**8153** graphit



**8501** indigo blue



**8510** ivy green



**8001** teak



**8060** dove blue



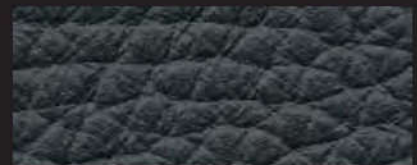
**8058** fir green



**8013** jet black



**8513** navy blue



**8512** black green



**8252** black blue



Kollektionsmuster sind keine Urmuster. Kleine Farbabweichungen sind möglich.  
*Swatches are no master samples. Small differences may occur.*



Hans Reinke  
Handelsgesellschaft mbH

Brandstücken 20      Tel. +49 40 39 10 68-0  
22549 Hamburg      Fax +49 40 39 10 68-29  
info@hans-reinke.com      www.hans-reinke.com

HOLLAND, BELGIUM & LUXEMBOURG



Hans Reinke Benelux B.V.

D'n Oliepint 2      Tel. +31 13 505 67 02  
5081 NT Hilvarenbeek      Fax +31 13 505 30 73  
Netherlands      info@hans-reinke.nl

SWITZERLAND & AUSTRIA



Jörg & Reinke GmbH

Bahnhofstrasse 42      Tel. +41 34 402 50 05  
CH-6162      Fax +41 34 402 55 53  
Entlebuch      info@joerg-leder.ch

POLAND



Automotive Textiles

Jakub Ponczyński      Tel. +48 42 288 10 10  
93-490 Łódź      Mob. +48 513 014 610  
Pabianicka 119/131      jakub@ponczynski.com